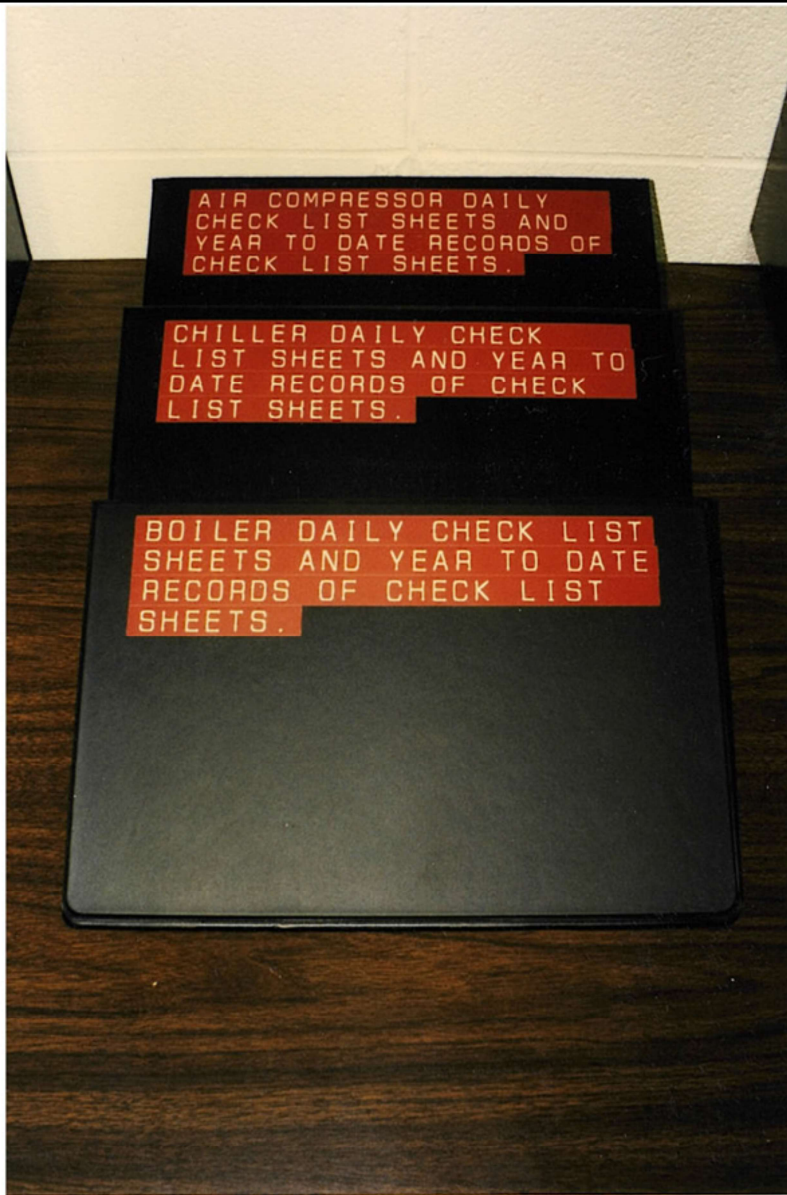




Wow! A few from the vault! I found these old pictures while spring cleaning my desk. These pictures are from way back in 1995 when I had first arrived in South Carolina and working for General Nutrition Company as a General Maintenance Engineering Technician and later in 1999 when I was the Maintenance Manager for Alfmeier.

Early in my employment with General Nutrition Products my organizational acumen was quickly recognized. I was asked to revamp the ballroom which had been neglected for a long time. I was also asked to undertake a responsibility of reorganizing and developing methods of daily as well as periodic checks, service and planned maintenance of all operational plant machinery and their respective and ancillary equipment, boiler feed water tanks, HVAC units, air handler units, Air compressors, air dryers, kathnabar units (Air handler machines which use lithium chloride to control humidity by absorbing moisture from the air) water chillers, cooling towers and of course the steam boiler itself.

The first task with this project was the removal of 18 years of accumulated redundant equipment, junk and a ton of trash. I then started work on repairing, correcting and modifying pipe work, layout of equipment and control components. This I termed as the hard work, the soft work was the labeling designation of machines, pipe, electrical panels, generating logbooks, documentation files etc. This picture shows the logbooks that I had devised to provide myself with a stock record of events, work order archives and a diary for work orders. Good bookkeeping has proven itself to be one of the worthwhile activities as a source of invaluable reference.



Showing it age with that old Dymo embossing label maker. One mistake with spelling and you have to make the label all over again.

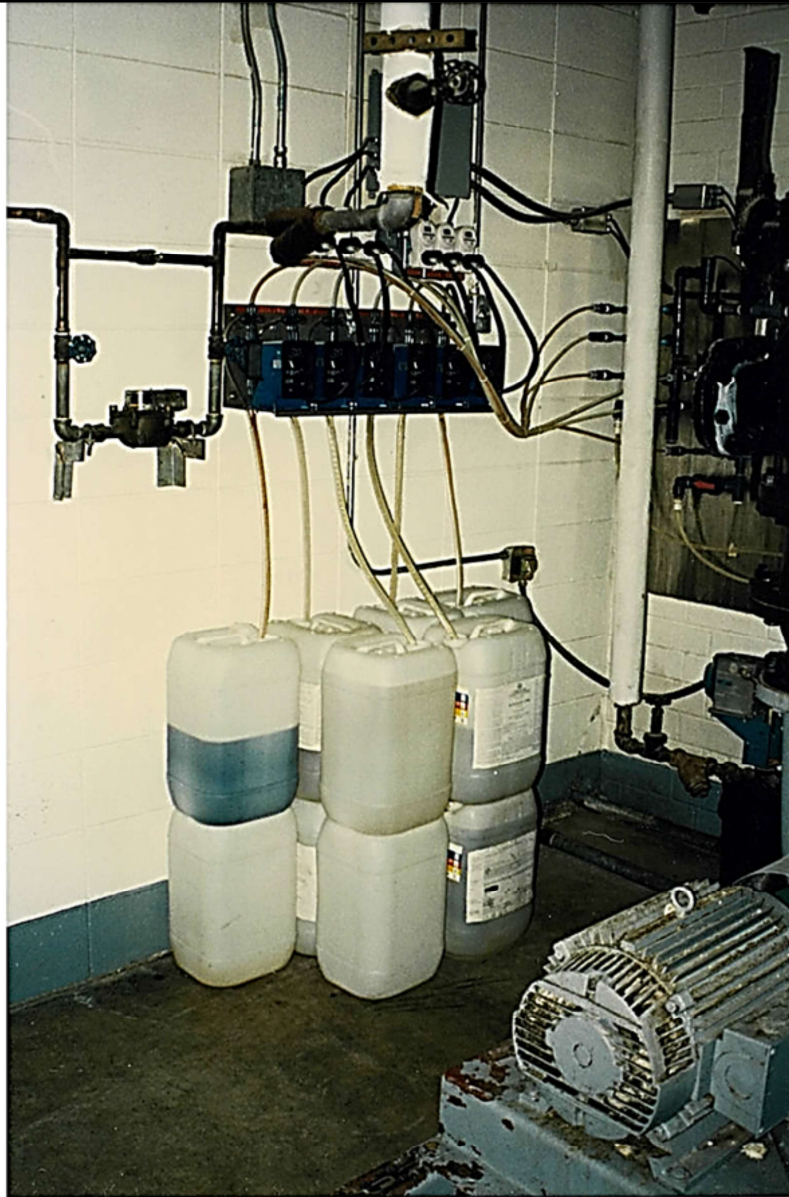




I am a neat freak...



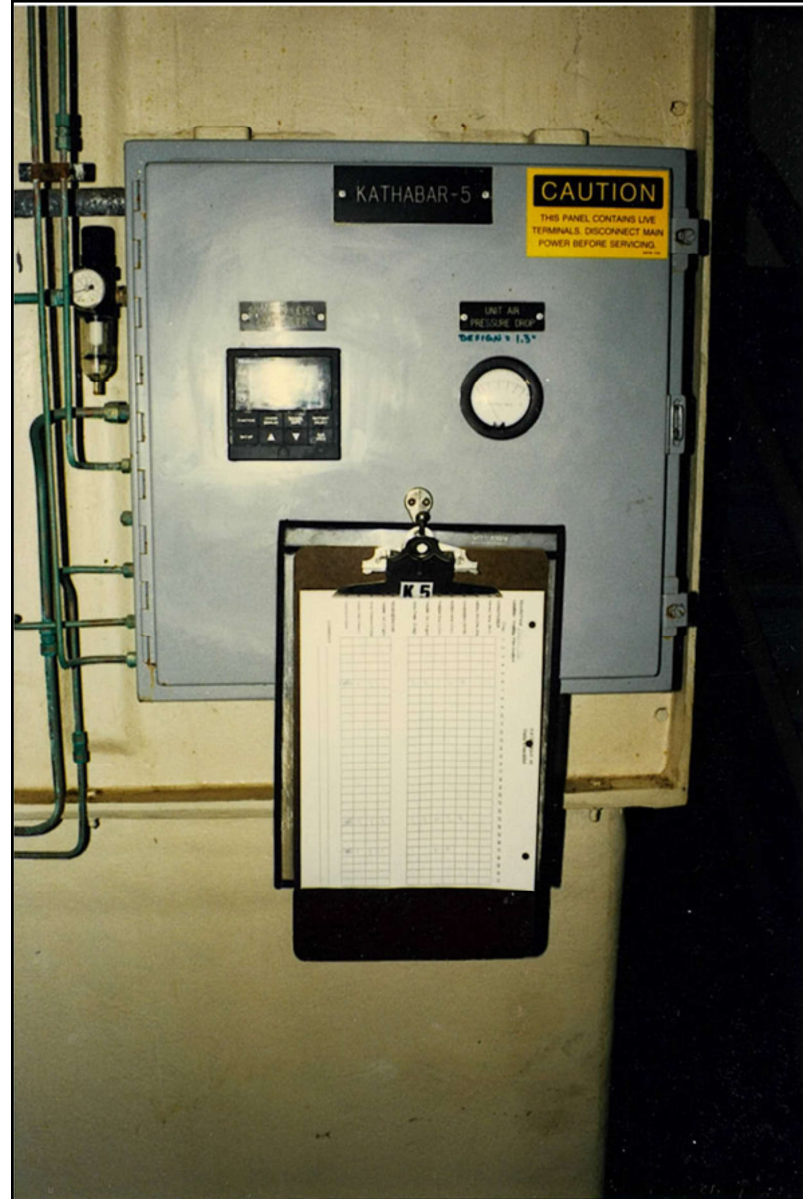
Labeling all the electrical panels. I traced every disconnect, switchboard, load station and panel boards I could find and marked it as to what it was fed from and supplied to. My meticulous labeling of such components and panels paid off with speedy troubleshooting of switches et cetera. It also gave confidence to other maintenance personnel who were up to now unfamiliar with switch gear locations and their purposes.



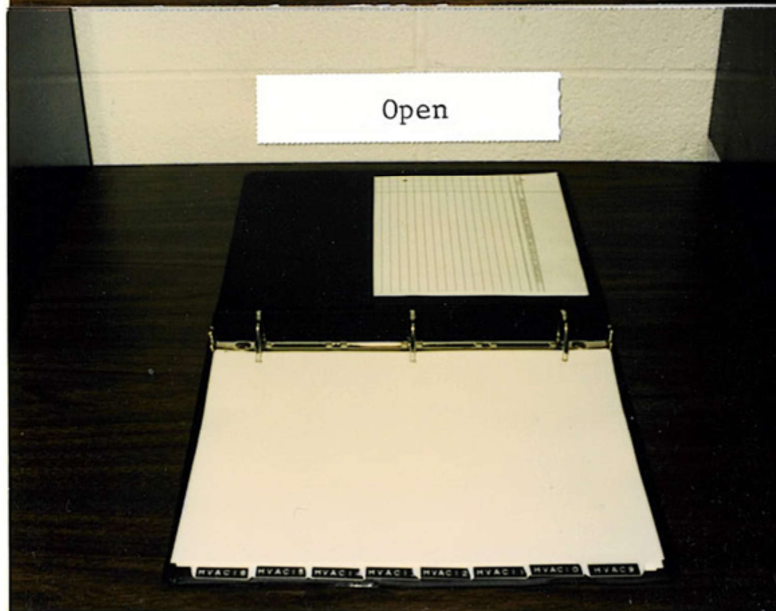
A major concern for me was water treatment of the cooling towers and the boiler feed. These chemical pump feed stations to say the least were a mess. No bleed lines, broken Comm leaking valve stems, tangled tube lines, No designation labeling and mismatched chemical containers. My only regret is that I didn't take a before photograph to compare it with what you see now.



None of the pipelines in the boiler room were labeled as to their contents and direction of flow. This photograph is just one of hundreds showing just one example of my pipe labeling and abbreviations taxonomy. There is actually a standard of color codes for pipe and its contents in this case yellow already represents natural gas.



I decided to localize checkpoints for those machines which require daily written check off inspections this facilitated routine inspections as many machines were site wide and one could at a glance pick up the clipboard off the machine being inspected and see immediately any deviations or trends in flow, pressure or temperature etc.



Machine, equipment and auxiliary equipment brochures, manuals, bulletins and information sheets, all listed by manufacturer's name in top of file tab with brief description of contents. The above photograph shows HVAC filter log and work order diary.



During my time as maintenance manager for Alfmeier this was our maintenance key performance formation board or what we preferred to call it 'Vital Signs'.



TPM information and cleaning supplies board. This I designed and made myself all 20 of them.